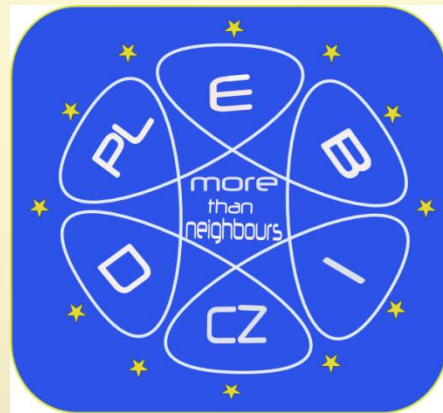


Babylon Centre

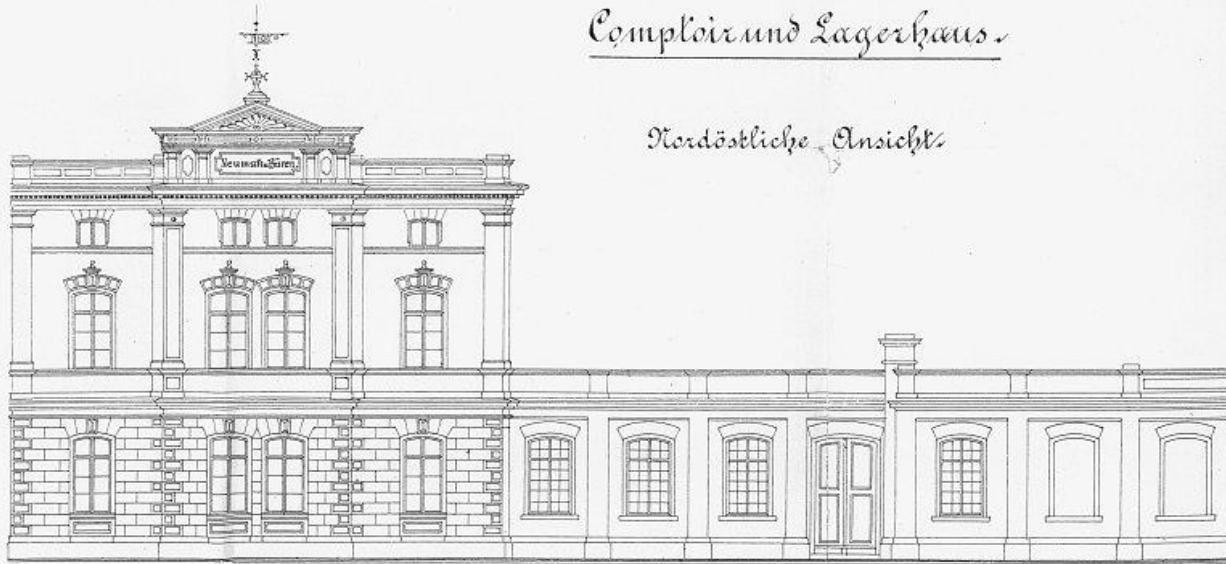


Eva Nestrojilová
2012

Entwurf
zu einer mechanischen Weberei
für die Herren Neumann u. Büren
in Reichenberg.

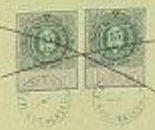
Comptoir und Lagerhaus.

Nordöstliche Ansicht



Centre Babylon – a unique centre of family
entertainment and social life Nitranská 1 Liberec
conversion from weaving factory Hedva Liberec

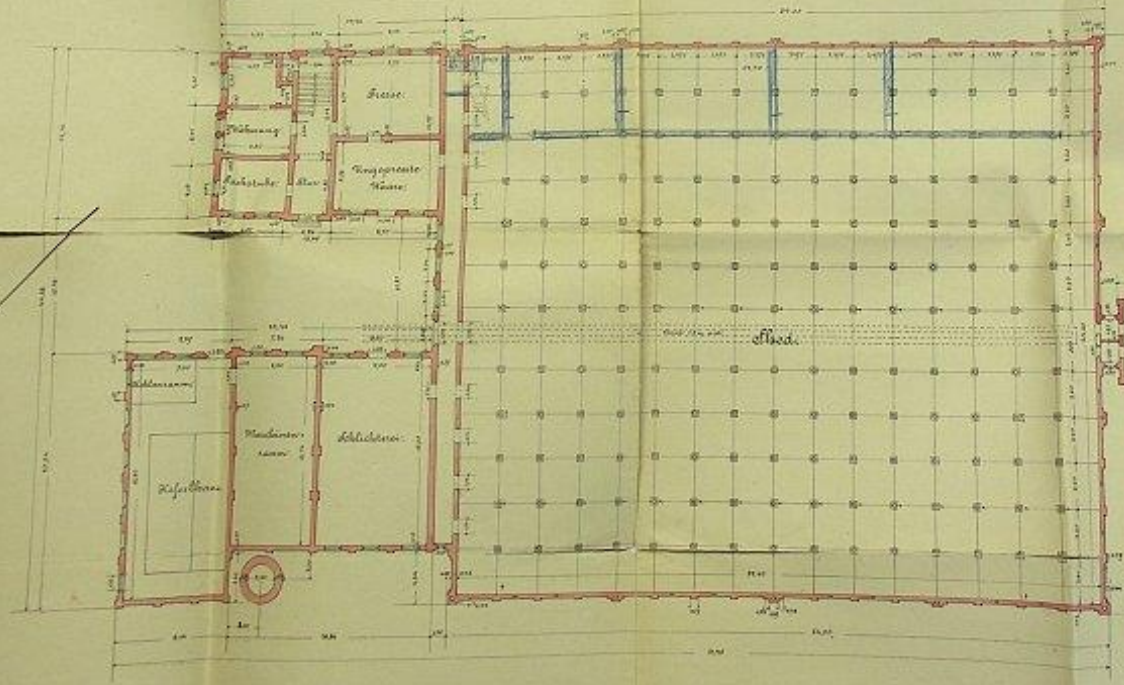
Entwurf
zu einer mechanischen Weberei
für die Herren Neumann u. Büten
in Reichenberg.



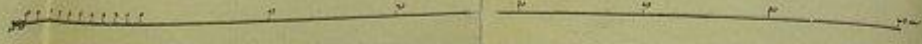
Blatt II

Wohlwunders dem Bauingenieur
Entwurf der Weberei zum Ausschlag
in Reichenberg
Gezeichnet von dem Bauingenieur
Jantusch

Grundriss



Maasstab 1:500



Reichenberg 11. Februar 1855
Jantusch

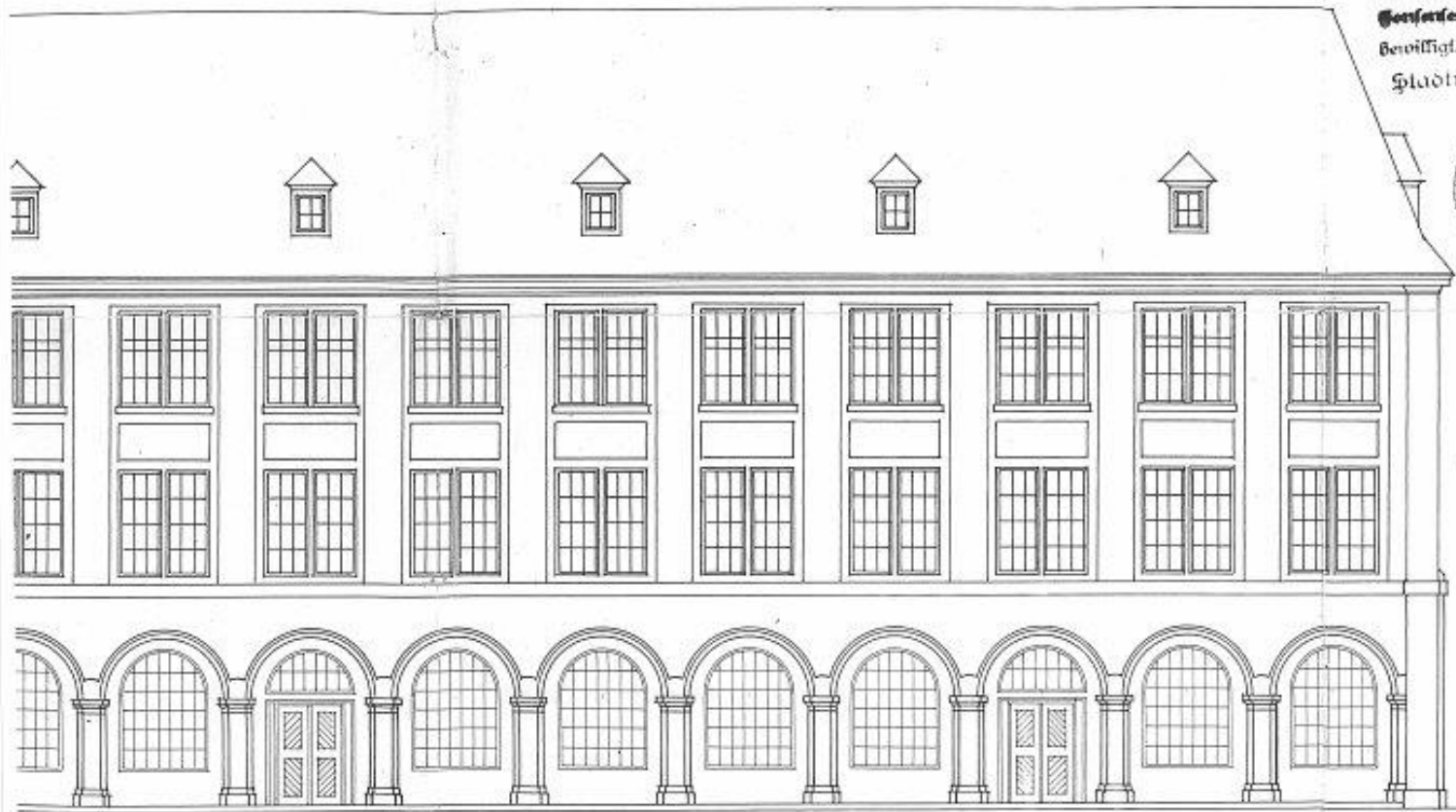
Architekt
Jantusch

The first building of mechanical weaving factory was built by architect Bürger in 1885 for Neumann and Bürren in Wuppertal-Barmen as a single-stored building with basement on a ground plan of 16x12 fields with a roof supported by cast iron pillars, to which a boiler house, an engine room and an administrative building were attached.

The company was renamed:

- C. Neumann Söhne, Barmen – Reichenberg (Liberec) – Wien in 1902
- Silka, national company Liberec, after 1945
- Hedva, national company Liberec , 1952

Das untere der
Gesamtes noch
bevolligt.
Stadt...



berg, den 27. April 1914.

Maßstab 1:100.

The original buildings were reconstructed and extended between 1905 – 1914. The architect Fritz von Hüsgen from Wuppertal designed the annex, adapted the atypical production building with an arcade and a high attic roof of the type used in town development. The factory kept its appearance until the 1990s.





In 1997 Centre Babylon was created with reconstruction of the unused weaving factory, designed by Jiří Palas. The current indoor complex covers about 30,000 m² in Jeřáb district of Liberec.



One part is a hotel, the others have a special atmosphere of shopping town with streets, shops, street lamps and stylish restaurants, all under one roof.



The most attractive part is the first Aquapark in the Czech Republic with its system of pools, caves and other water attractions. The IQ park, meanwhile, is the place to test your knowledge and skills. The fun fair (Lunapark) offers further entertainment while the wellness center provides relaxation in the form of a salt cave and loungers.



It is the dominant modern feature of the region, a popular destination for individuals and organised trips of Czech and foreign tourists. It is cheaper when you visit the ski areal on Ještěd peak in winter and use the skipass to enter aquapark Babylon.